

2-11 2-114

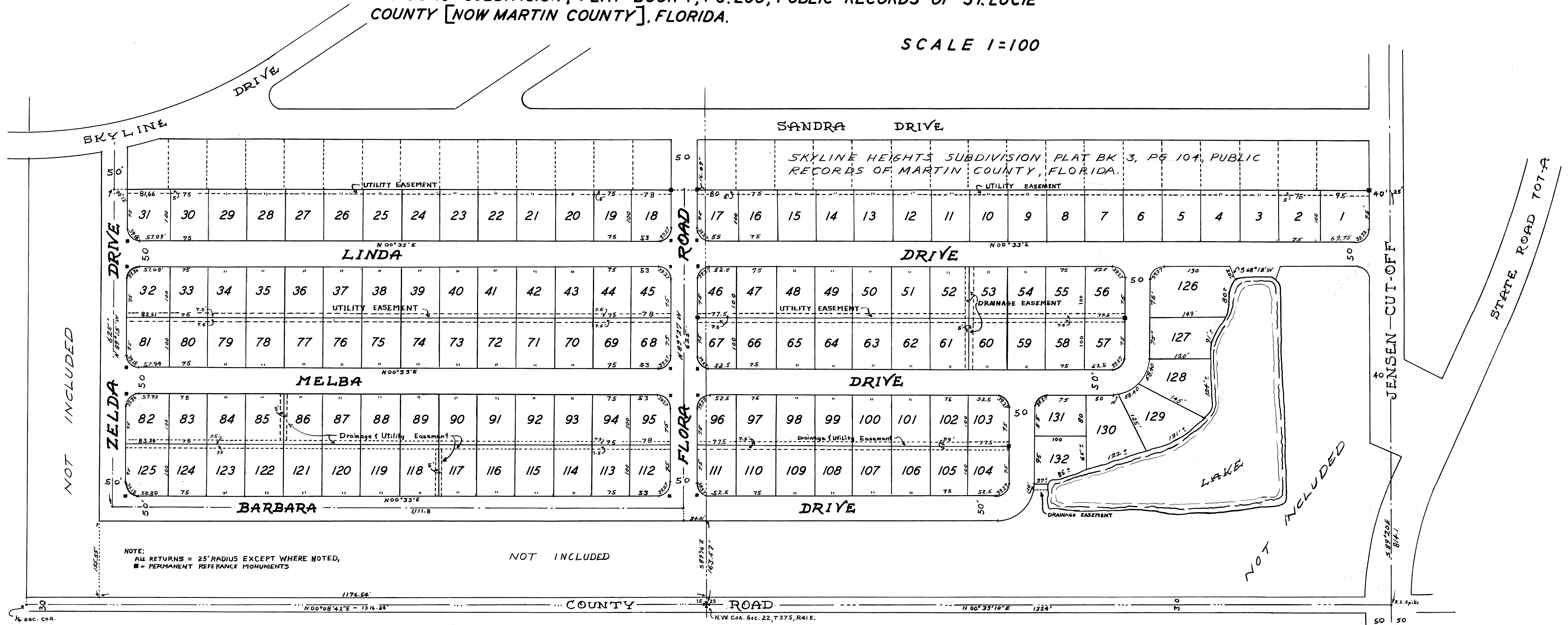
FIRST ADDITION

Skyline Heights

BEING A SUBDIVISION OF LOTS 11,12,13 & 14, SECTION 22, LESS THE EAST 510'; AND LOT 7, LESS THE NORTH 140'; AND THE EAST 510'; AND LOTS 8,9 & 10 LESS THE EAST 510'; SECTION 15, T 37 S, R 41 E, ALL LOCATED IN BALLANTINE & MOORS SUBDIVISION, PLAT BOOK 1, PG. 205, PUBLIC RECORDS OF ST. LUCIE COUNTY [NOW MARTIN COUNTY], FLORIDA.

SCALE 1=100

I Hereby Certify that I have examined the attached plat and find that it complies, in form, with all the requirements of chapter 177, Florida Statutes, and was filed for record at 10:13 AM this 5th day of May A.D., 1959, and recorded in plat book 3, pg. 114 in the office of the Clerk of the Circuit Court at Stuart, Florida.
CLERK OF THE CIRCUIT COURT
Sarahy Fene
By: *J. H. Evans, Jr.*
File No. 692218



DEDICATION STATE OF FLORIDA COUNTY OF MARTIN

Know all Men By these presents that Samuel N. Rhodes Jr. and Elaine M. Rhodes, his wife, and Robert M. Pitchford and Marguerite M. Pitchford, his wife, owners of the land shown hereon, do hereby dedicate to the perpetual use of the public the roads shown hereon.

In witness thereof we have set our hand and seal this 5th day of May, A.D., 1959.

Rudolf C. Fisher
WITNESS
Med A. Stafford
WITNESS
Rudolf C. Fisher
WITNESS
Med A. Stafford
WITNESS

Samuel N. Rhodes Jr.
SEAL
Elaine M. Rhodes
SEAL
Robert M. Pitchford
SEAL
Marguerite M. Pitchford
SEAL

ACKNOWLEDGEMENT STATE OF FLORIDA COUNTY OF MARTIN

Before Me This day personally appeared Samuel N. Rhodes and Elaine M. Rhodes, his wife, and Robert M. Pitchford, and Marguerite M. Pitchford, his wife, who acknowledged to and before me that they executed the dedication shown hereon for the uses and purposes therein stated.

Witness my hand and official seal this 5th day of May, A.D., 1959 at Stuart, Florida.

Lettie Zarsital
NOTARY PUBLIC
My commission expires July 6, 1960

CERTIFICATE STATE OF FLORIDA COUNTY OF MARTIN

I Hereby Certify that the plat shown hereon is a true and correct representation of a survey made under my direction, and that said survey is accurate to the best of my knowledge and belief, and that permanent reference monuments were place as prescribed by law.

Subscribed and sworn to before me this 5th day of May, A.D., 1959.

Med A. Stafford
REGISTERED LAND SURVEYOR
FLORIDA CERTIFICATE NO. 443
Lettie Zarsital
NOTARY PUBLIC
My commission expires July 6, 1960

Approved
Board of County Commissioners
Marion A. Rowell
CHAIRMAN

STAFFORD & BROCK
ENGINEERS
SURVEYORS
STUART FLORIDA
Date: 4/20/59 DWG. RBT